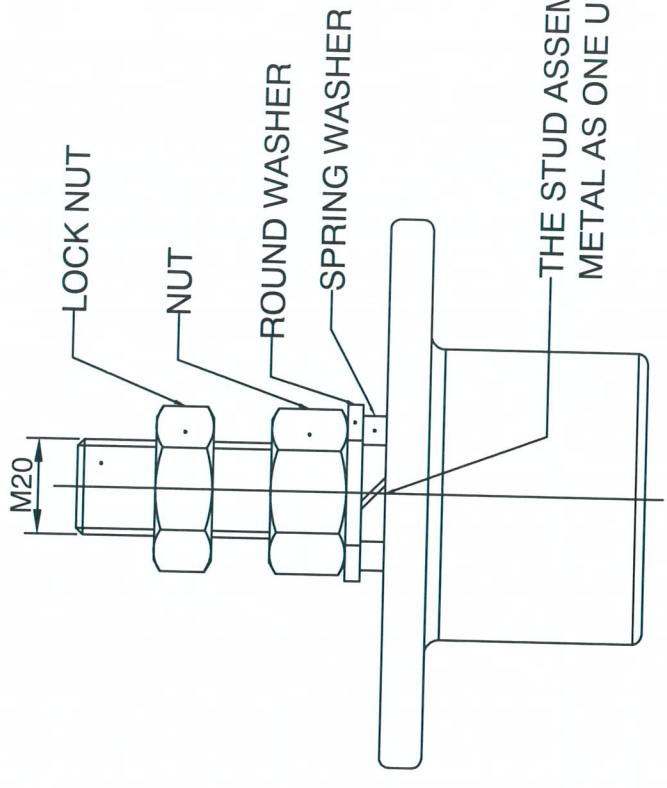
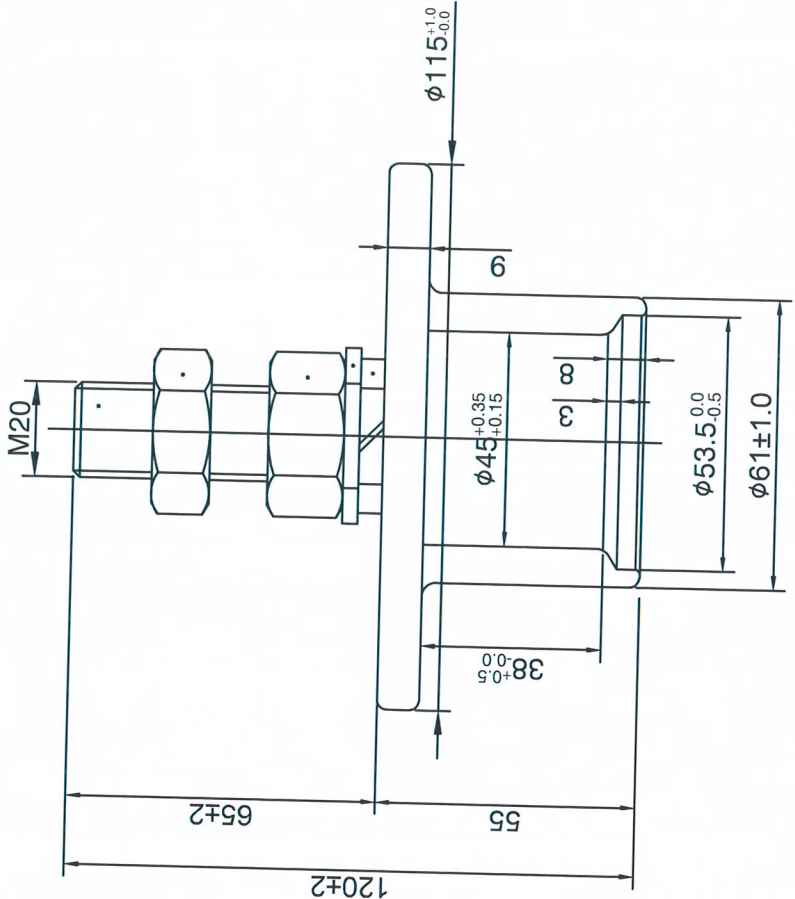


CODE No. 4102-507

NO.	DESCRIPTION	DWG. NO.	MATERIAL	QTY	FINISH/SIZE	NOTE



NOTE:

1. END FITTING ARE MADE FROM SPHEROIDAL GRAPHITE CAST IRON.
2. THE TOLERANCE IS ±2% UNLESS OTHERWISE NOTED.
3. ALL DIMENSIONS ARE MEASURE AFTER HOT GALVANIZED.
4. GALVANIZING THICKNESS
- METAL PART : 90 μ m(AVG.), - BOLT/NUT/WASHER : 55 μ m(AVG.)

NO.	DATE	REVISIONS	DESIGNED	APPROVED	REMARKS
5	03/10/2021	φ115 plate 추가	J.H.PARK	C.H.PARK	
4	09/26/2016	제품 길이 확장을 위한 O-RING 부위 치수 변경	J.H.PARK	C.H.PARK	
3	01/29/2016	Galvanized thickness change : 90 μ m(min.) → Metal part : 90 μ m(avg.) → Bolt/nut/washer : 55 μ m(avg.)	J.H.PARK	C.H.PARK	
2	02/23/2015	TOLERANCE CHANGE-φ45, φ53.5	J.H.PARK	C.H.PARK	
1/R	10/31/2014	INITIAL RELEASE	J.H.PARK	C.H.PARK	
NO.	DATE	REVISIONS	DESIGNED	APPROVED	REMARKS

DESIGNED BY	CHECKED BY	APPROVED BY	SCALE	DATE
J.H.PARK			1/1	SEP.26.2016

1	STEEL STUD & BASE METAL	S45C	1	Standard
No	NAME	Material	Q'ty	Standard

DRIVEN BY	CHECKED BY	APPROVED BY	SCALE	DATE
J.H.PARK			1/1	SEP.26.2016

Line Post Insulator For Distribution	STEEL STUD & BASE METAL(M20XL65)

REF.NO.	SHEET NO

DWG.NO.	4102-507

